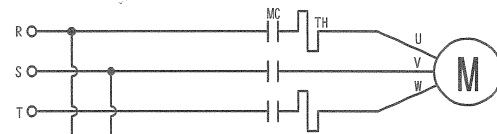
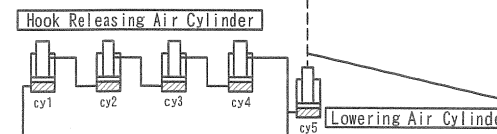
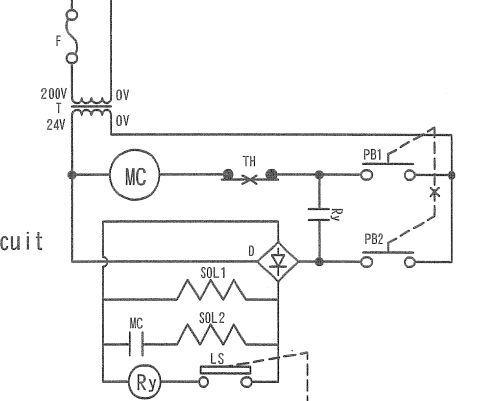


Spec.	
Model No.	SCL3000AP
Capacity	3000kgs
Vertical Travel	1800mm
Control	Push Button Type
Power	3 Phase
Control System	Electric Hydraulic
Motor	1.5kw 4P 10minutes Rating
Rising Speed	Approx. 58 Sec. (50HZ) Approx. 48 Sec. (60HZ)
Lowering Speed	28sec With Load Of 2500kgs
Distance Between Lift Center	1400mm
Applicable Vehicle	Passenger Vehicle Only
Machine Weight	850kgs (Lift Unit) 190kgs (Hyd. Unit)
Oil	ISO VG32
Oil Volume	15L
Air Pressure	0.5MPa~1.0MPa

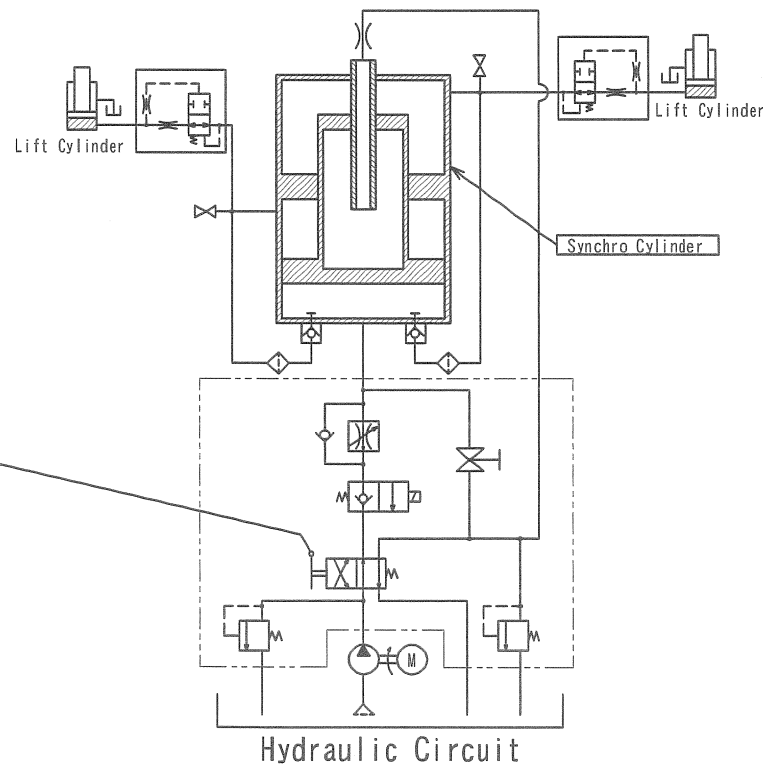
To Hydraulic Unit



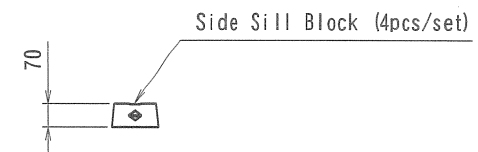
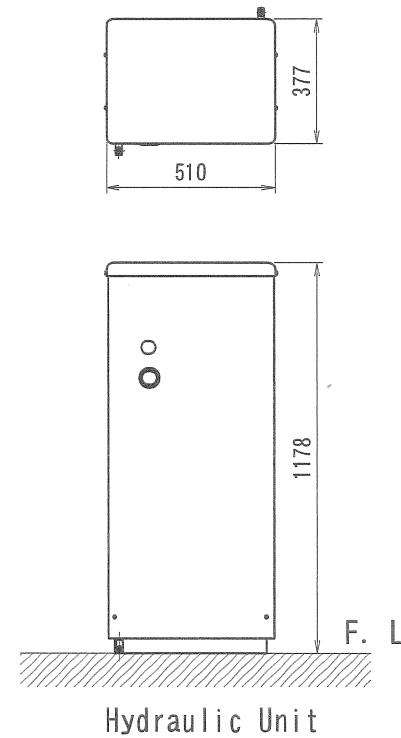
Electric Circuit



Air Circuit

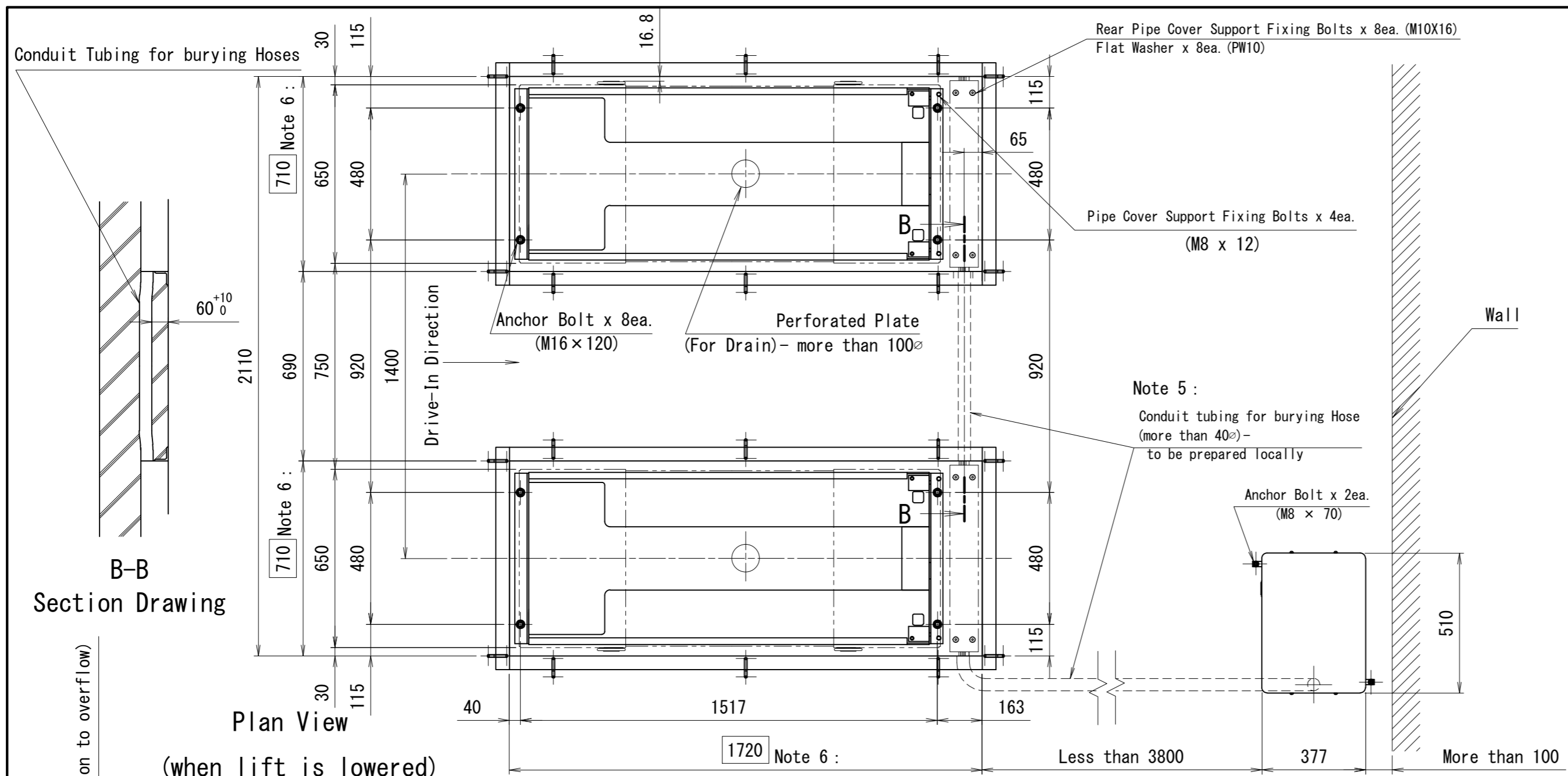


Hydraulic Circuit

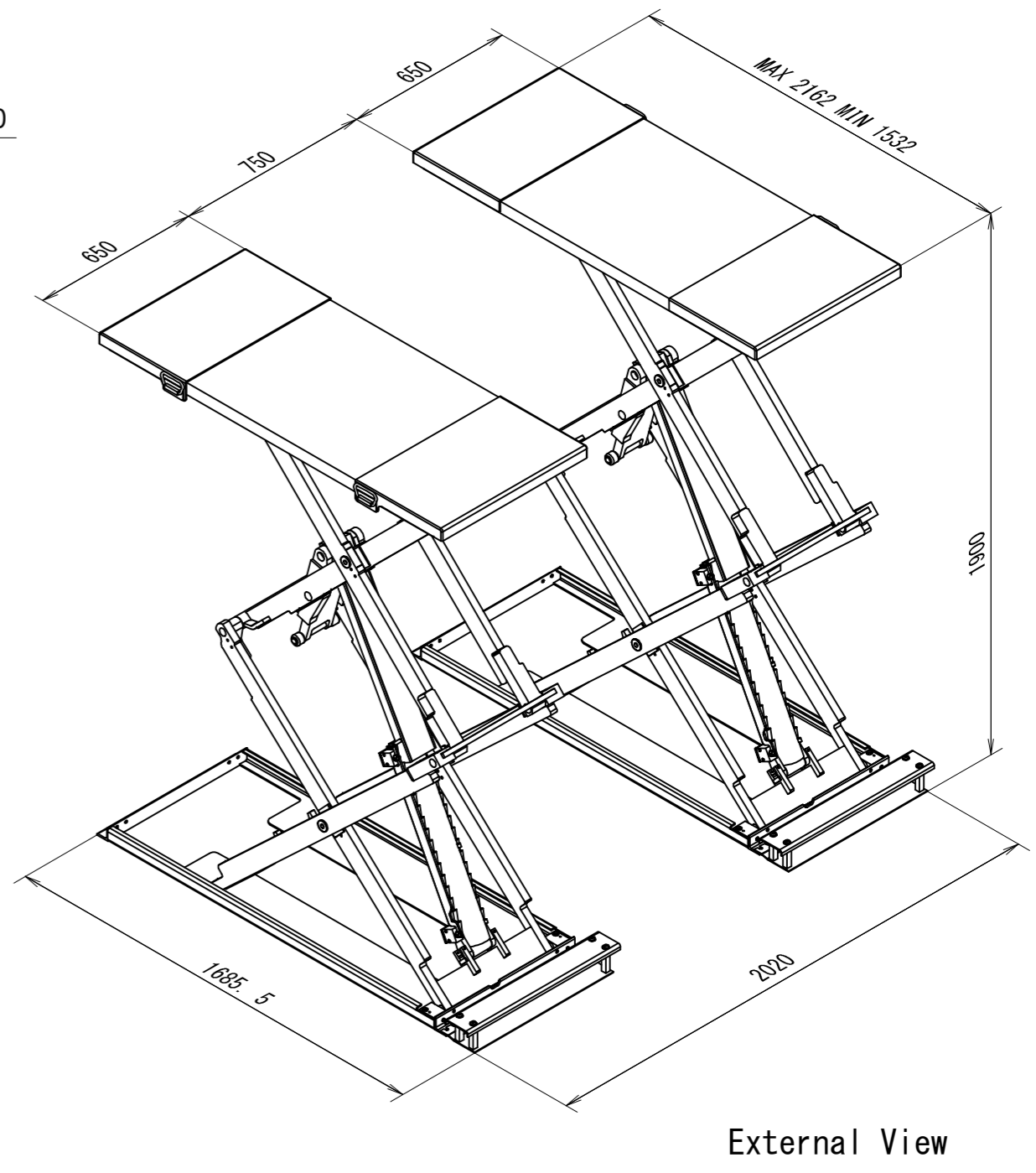
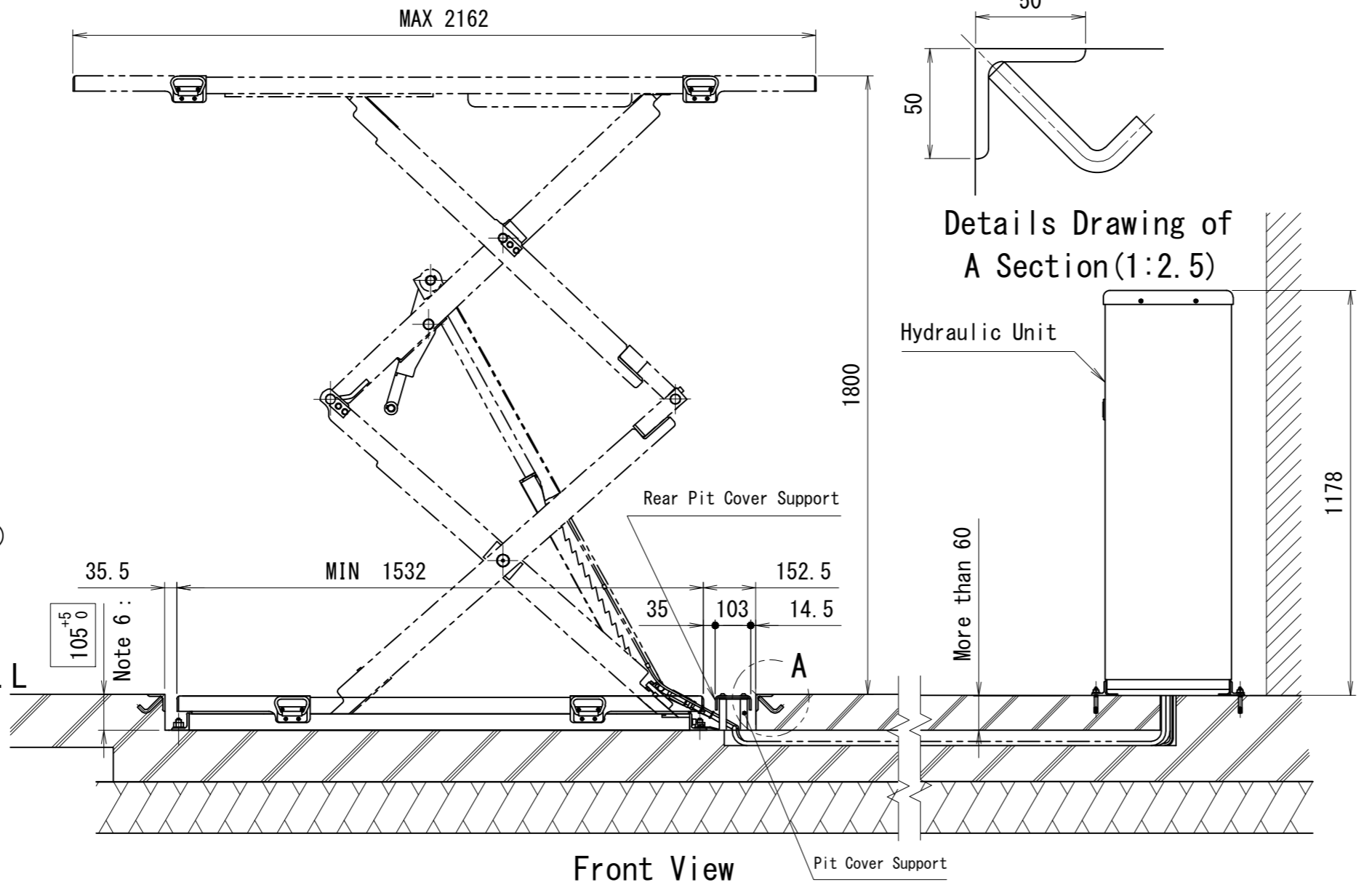
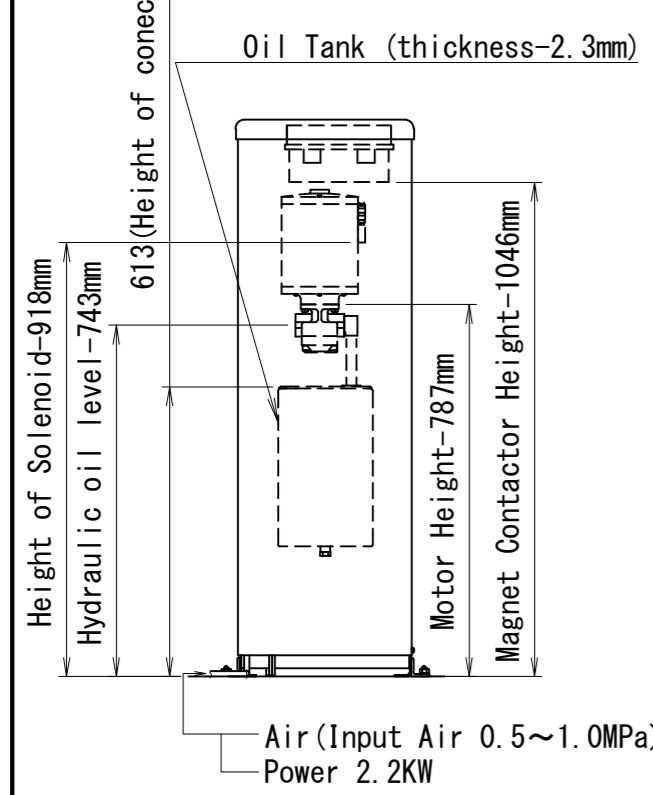


SUGIYASU CORPORATION										
品名 SCL3000AP Spec. Drawing										
図番 SCL3000AP -022000-01										
承認	1	2	3	4	5	6	7	8	9	
検									日付	2013/05/14
図									製	石川 恵
検									尺	1:20
図									度	

訂正	年月日	記	事	担当承認
----	-----	---	---	------



Model No.	SCL3000AP
Capacity	3000Kgs
Vertical Travel	1800mm
Operation	Push Button(24V)
Power	3PH 220/380/400/415V 50/60HZ
Drive System	Electro Hydraulic
Motor	1.5KW 4P·10Minutes Rating
Lifting Speed (when 3,000kgs. Loaded)	Approx. 58sec (50HZ) Approx. 48sec (60HZ)
Lowering Speed (when 3,000kgs. Loaded)	Approx. 28sec
Distance between Lift Center	1400mm
Applicable Vehicles	Passengers vehicle
Machine Weight	Lift unit-850Kgs., Hyd. Unit-190Kgs
Oil	ISO VG32
Oil Volume	15L
Air Pressure	0.5MPa~1.0MPa
Noise Level	70dB (A)



- Note 1 : Lift need to be installed on flat floor horizontally. In case there is gap of concrete under the Base Rollers, fill the mortar etc. to make flat
- Note 2 : Concrete floor must be strong enough to bear 4 ton weight under the lift
- Note 3 : Connect the lift and hydraulic unit with supplied hydraulic hose
- Note 4 : Air (Input Air 0.5~1.0MPa)
- Note 5 : Inside pit must have water drain and water should not go into Conduit Tubing for hose
- Note 6 : The spec in □ shows pit outside spec.

承認		株式会社スギヤス	
品名	SCL3000AP Installation Drawing		
検図番号	SCL3000AP -022000-06		
検図	1 2 3 4 5 6 7 8 9	日付	2018/08/02
検図	製 石	尺度	1:16 (1:2.5)

訂正	年月日	記	事	担当承認
----	-----	---	---	------